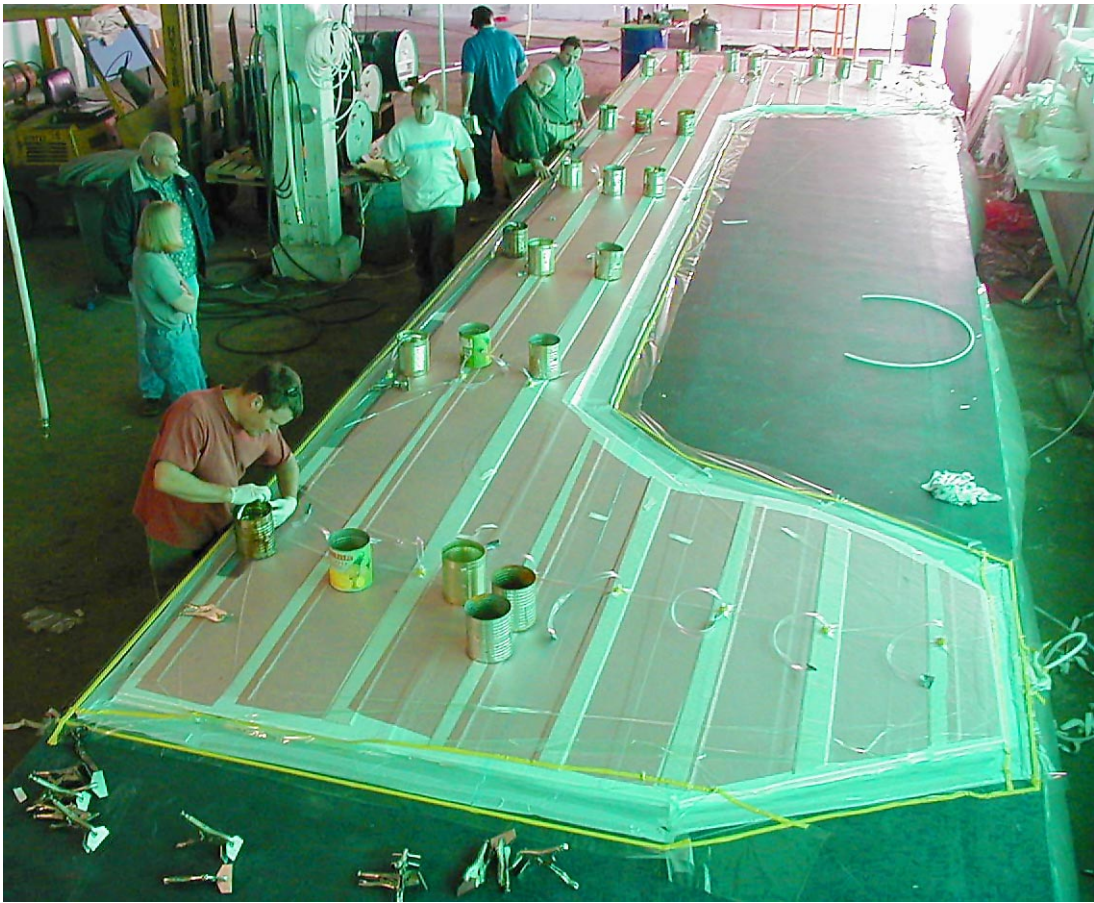
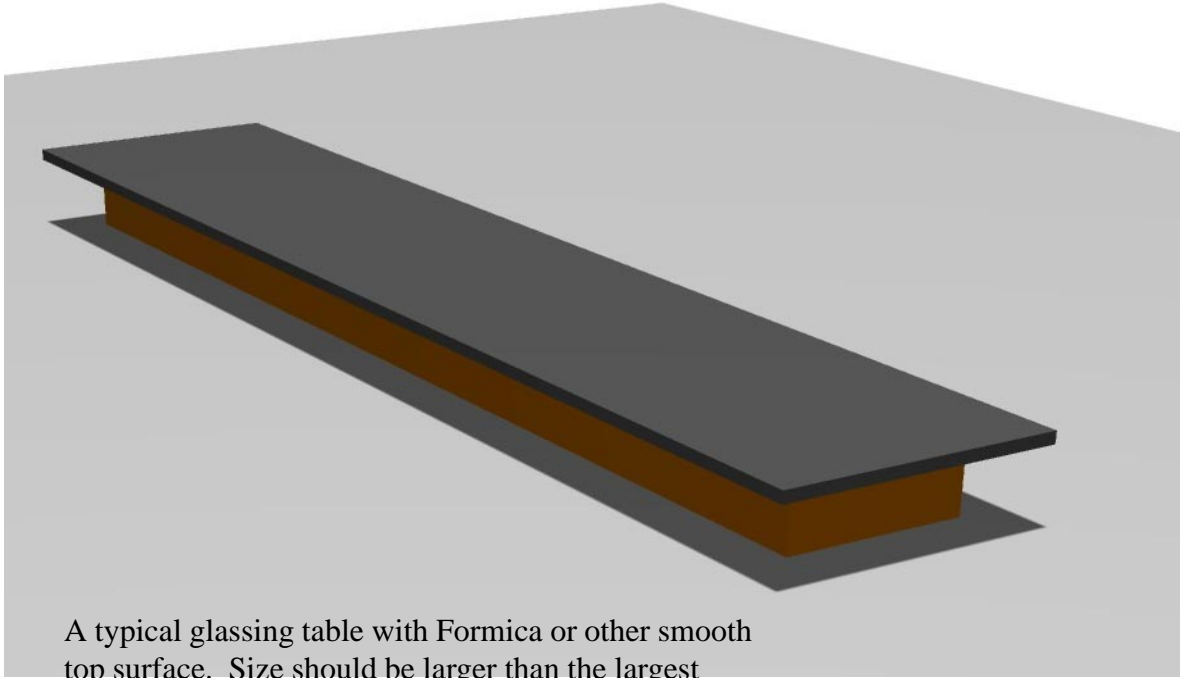


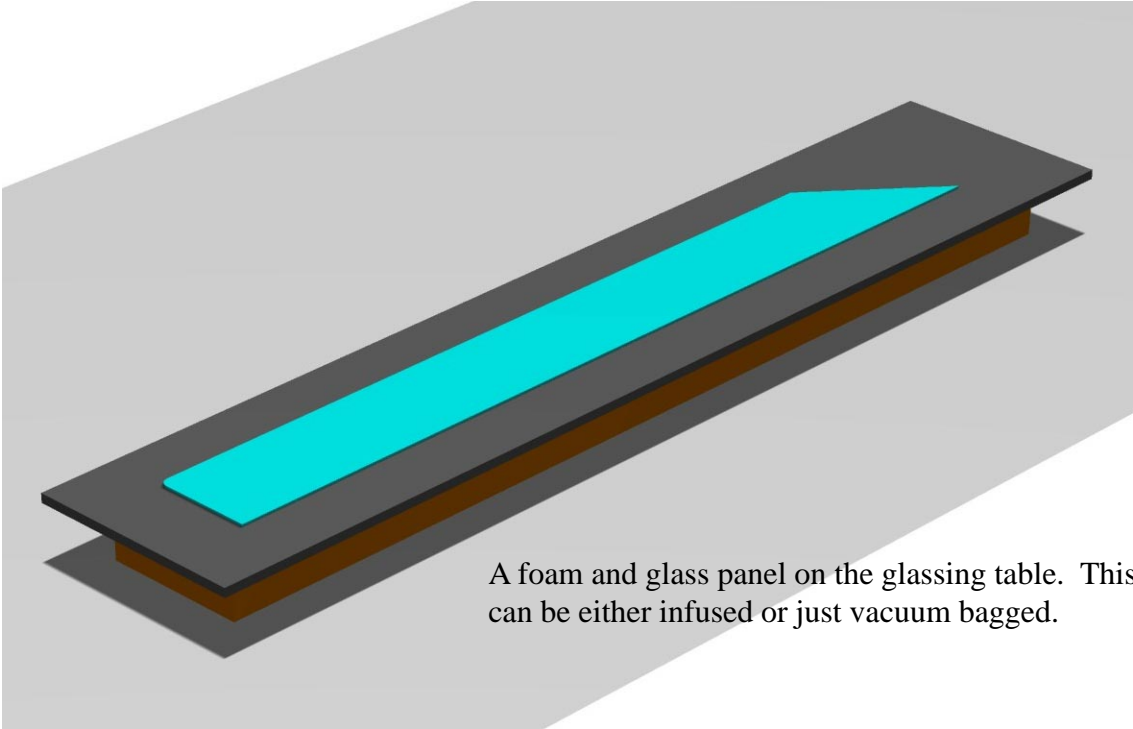
GLASSING TABLE MULTIHULL CONSTRUCTION



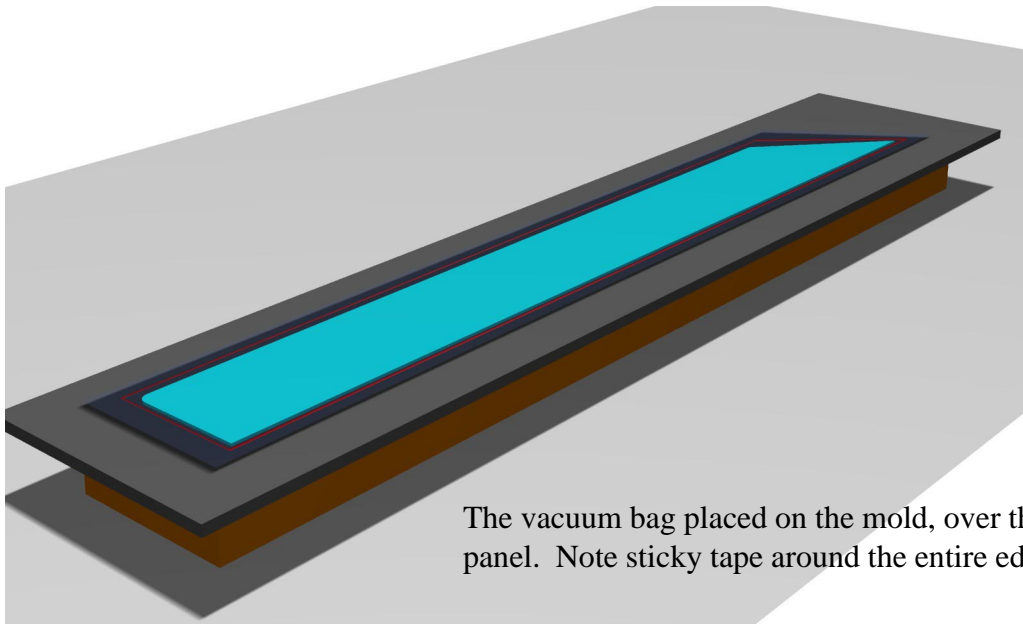
KURT HUGHES SAILING DESIGNS - GLASSING TABLE CONSTRUCTION



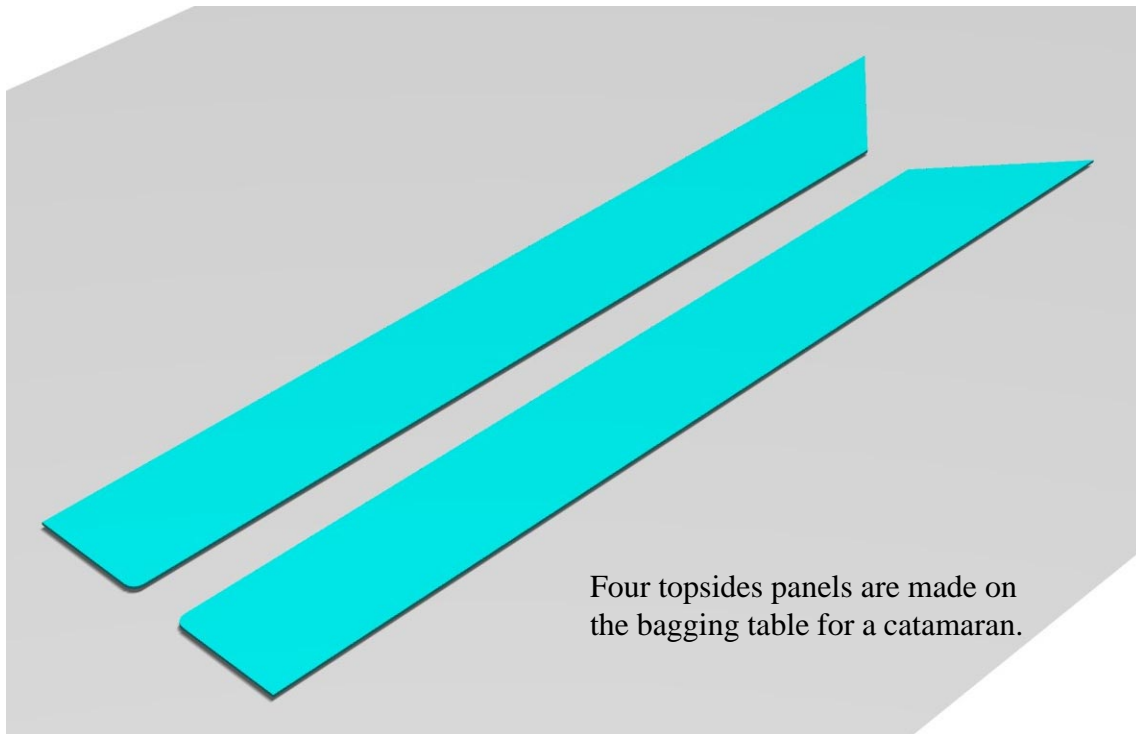
A typical glassing table with Formica or other smooth top surface. Size should be larger than the largest needed foam/glass panel.



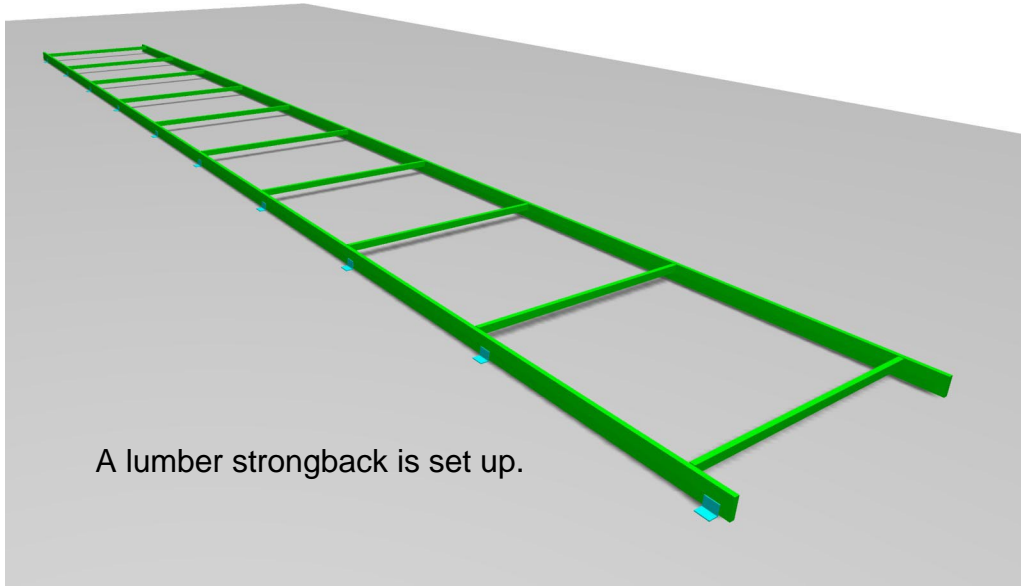
A foam and glass panel on the glassing table. This panel can be either infused or just vacuum bagged.



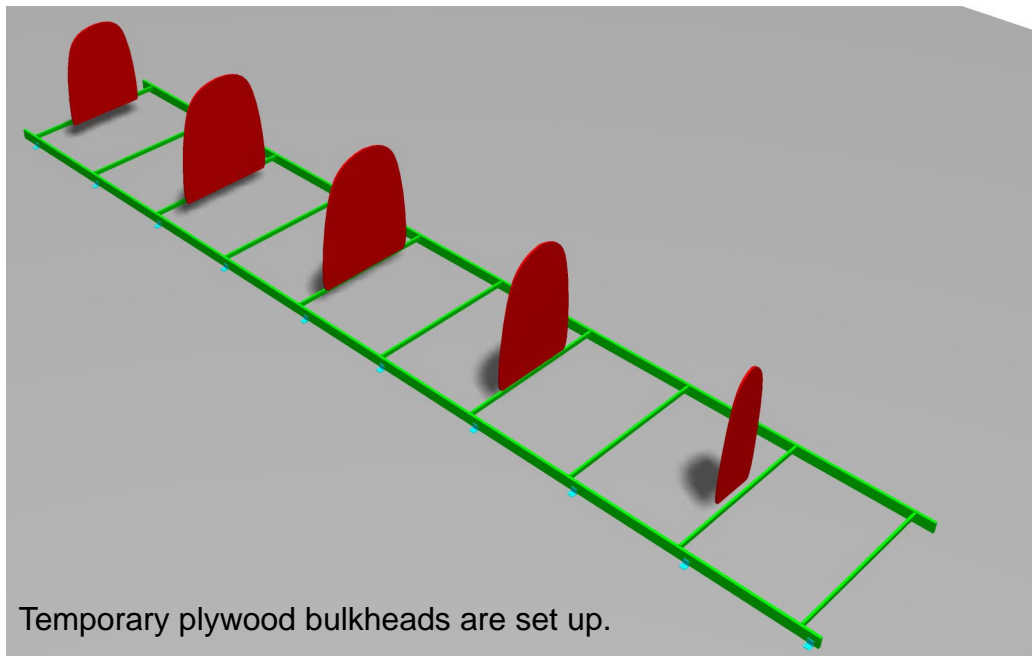
The vacuum bag placed on the mold, over the panel. Note sticky tape around the entire edge.



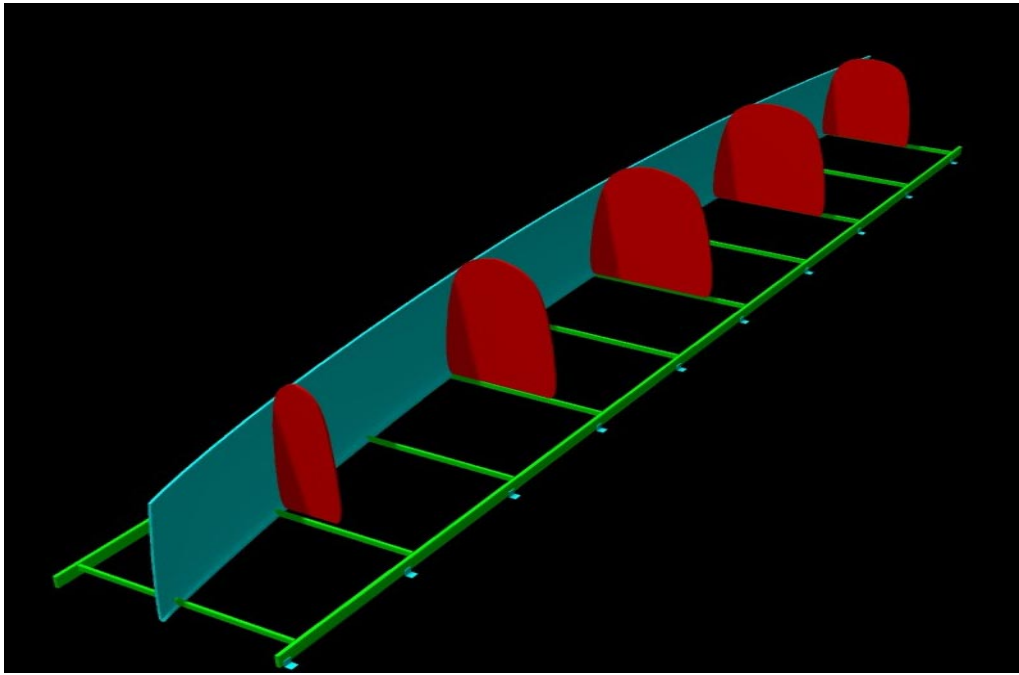
Four topsides panels are made on the bagging table for a catamaran.



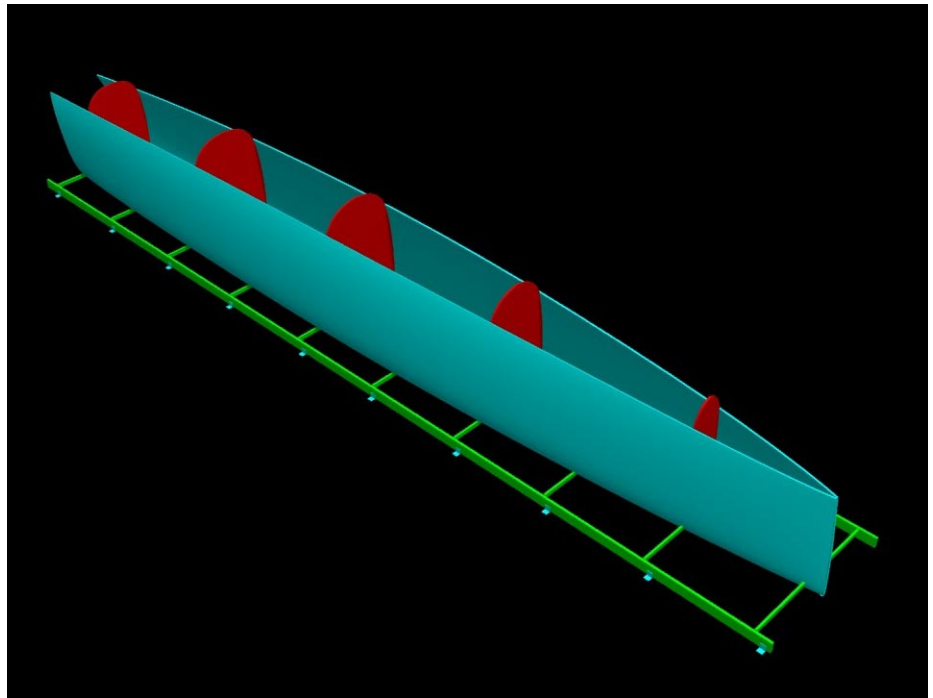
A lumber strongback is set up.



Temporary plywood bulkheads are set up.

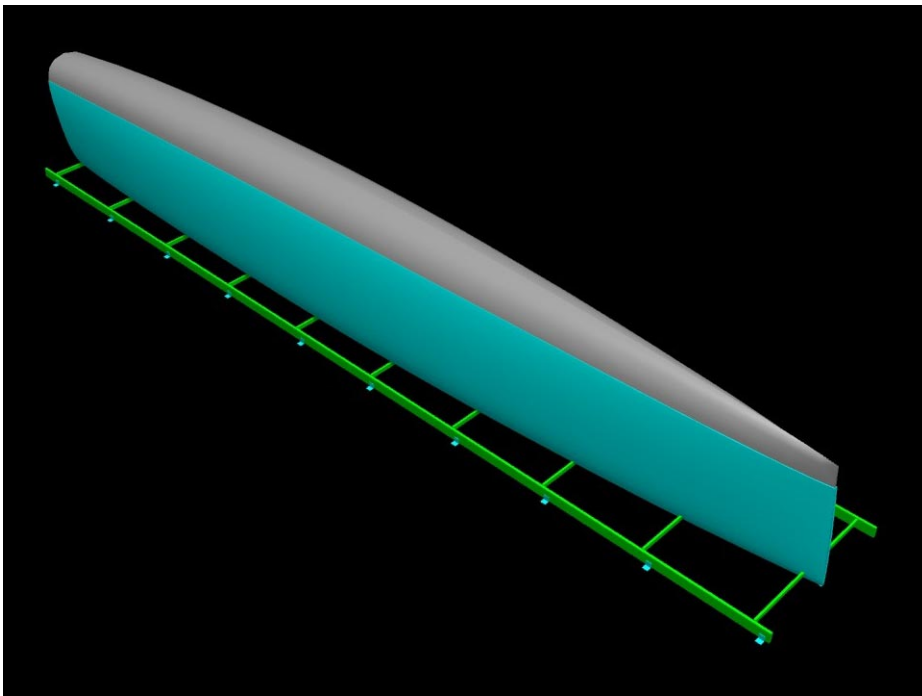


A half hull panel is pressed onto the bulkheads.

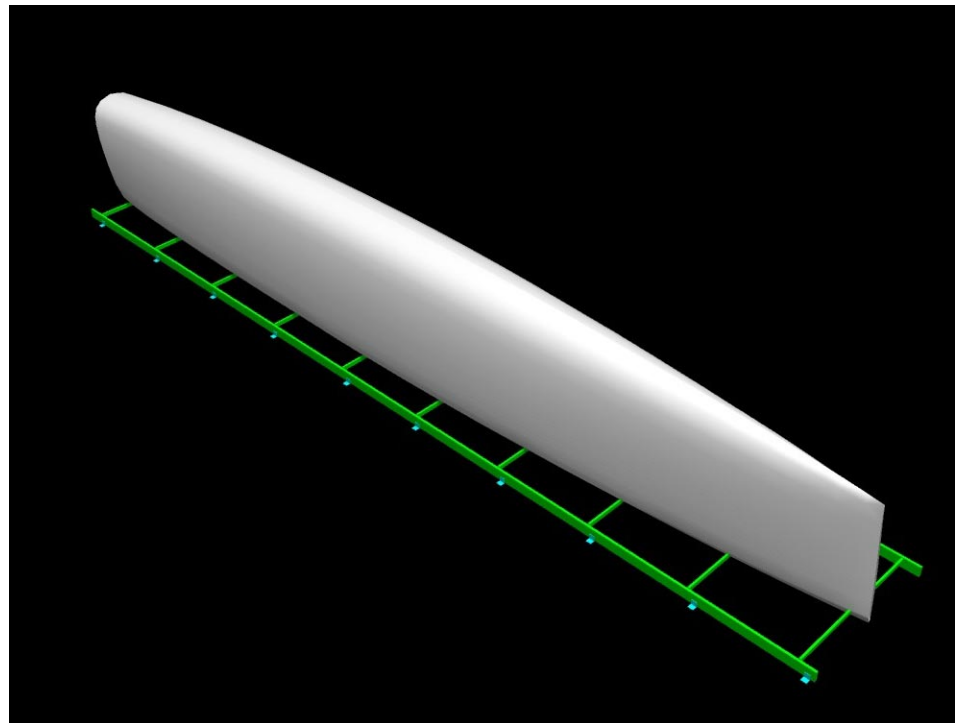


Then another is added to the other side.

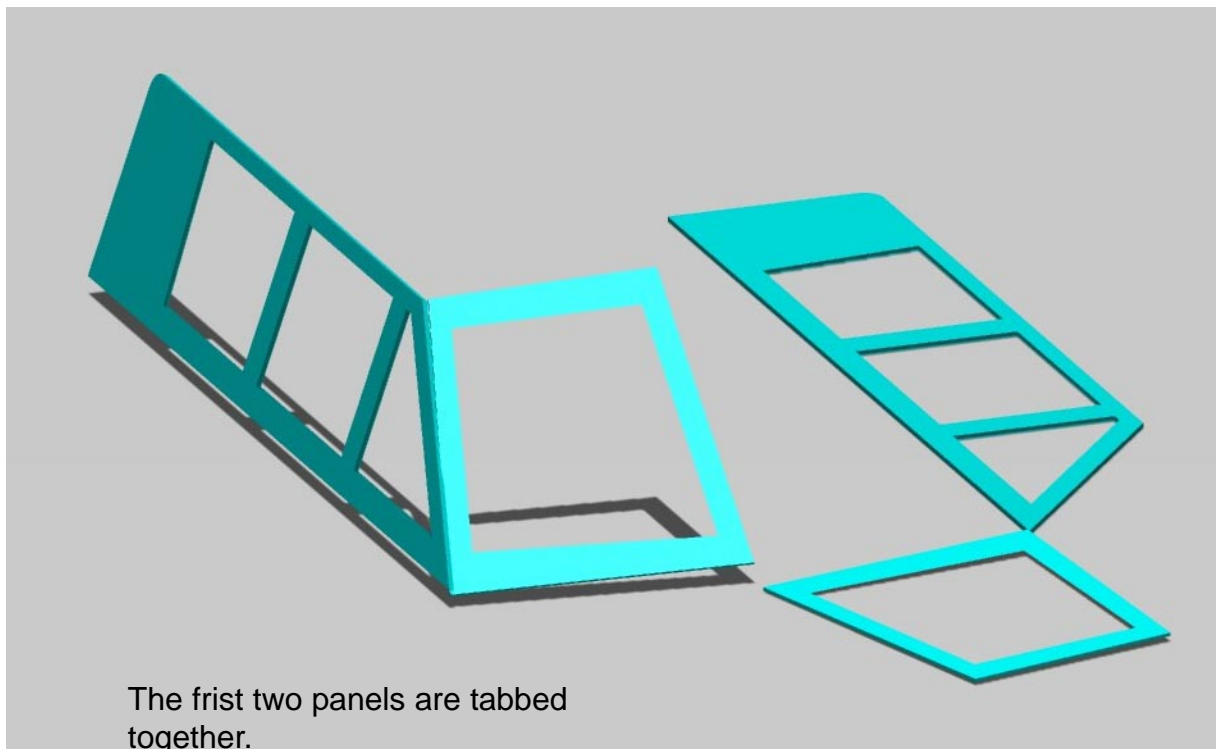
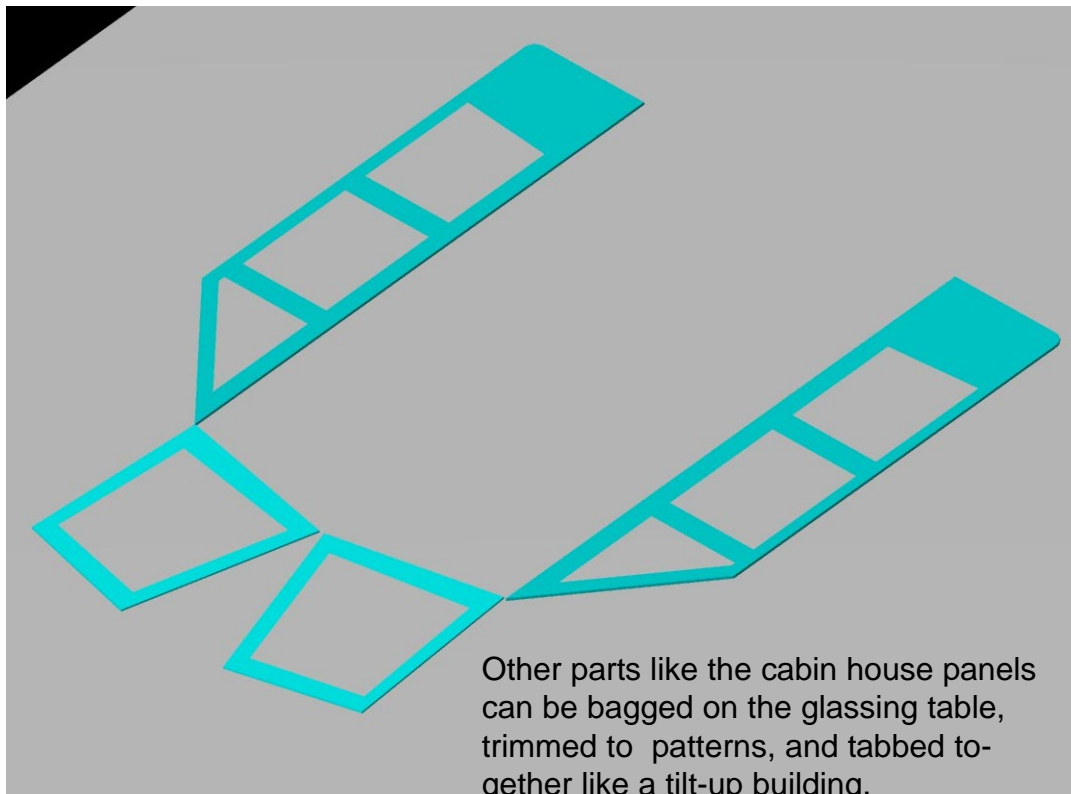
KURT HUGHES SAILING DESIGNS - GLASSING TABLE CONSTRUCTION



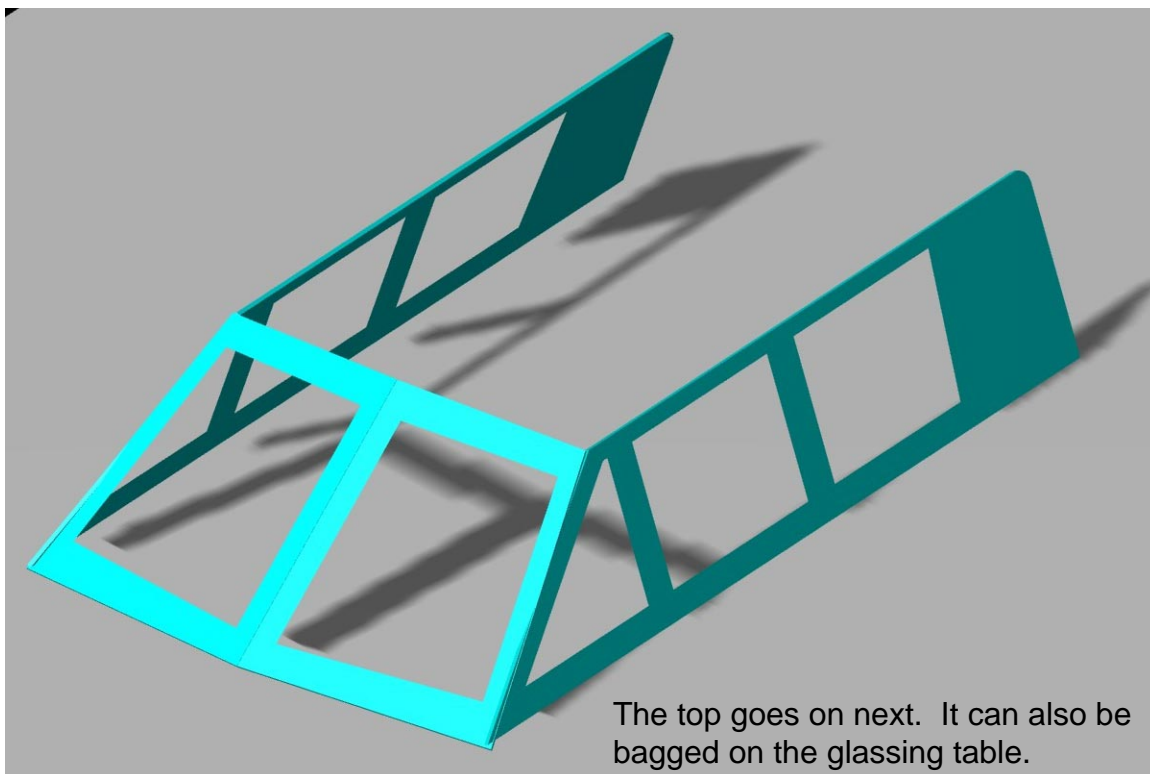
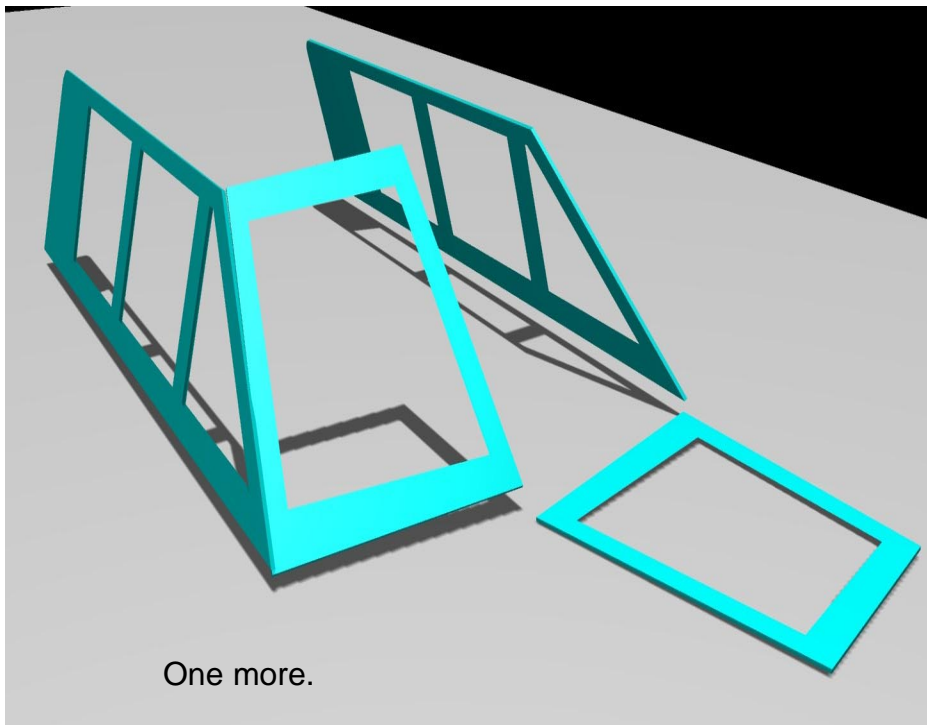
Finally, the turn of the bilge is finished with strip plank foam. Triaxial roving covers that foam.



The only fairing needed should be the relatively small strip area and its join with the panels.



KURT HUGHES SAILING DESIGNS - GLASSING TABLE CONSTRUCTION



KURT HUGHES SAILING DESIGNS - GLASSING TABLE CONSTRUCTION